

ALIGNMENT EXAMPLE



Figure 1. 2D/2D match of kV and DRR

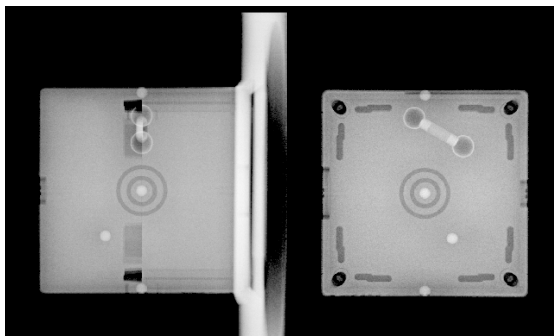


Figure 2. Concentric circles verify accurate alignment of ISO Phantom and establish true position of the KV radiation isocenter

SPECIFICATIONS

PHANTOM BODY	Dimensions: 12 cm x 12 cm x 12 cm Weight: 1.7 kg Material: Plastic Water®
FIDUCIALS	Qty: Four (1) Center Fiducial (1) Offset Target (2) Magnification Check Fiducials Material: Ceramic Diameter: 6.35 mm
OBI AUTO-REGISTRATION TARGET	Qty: One Material: Aluminum

MODEL 023 INCLUDES

QTY	DESCRIPTION
1	Dialy ISO Phantom
1	User Guide
-	48 Month Warranty

OPTIONAL ACCESSORIES

PART NO.	DESCRIPTION
023-01	ISO Opt Frameless SRS Fiducial Array Frame Adapter
023-03	ISO Analyze™ Image Analysis Software
023-04	ISO Base™ Alignment Platform
023-08	6DOF ISO Base™



Software solution for auto image analysis of ISO phantom



ISO Opt Frameless SRS Fiducial Array Frame Adapter



ISO Base™ Alignment Platform



6DOF ISO Base™

